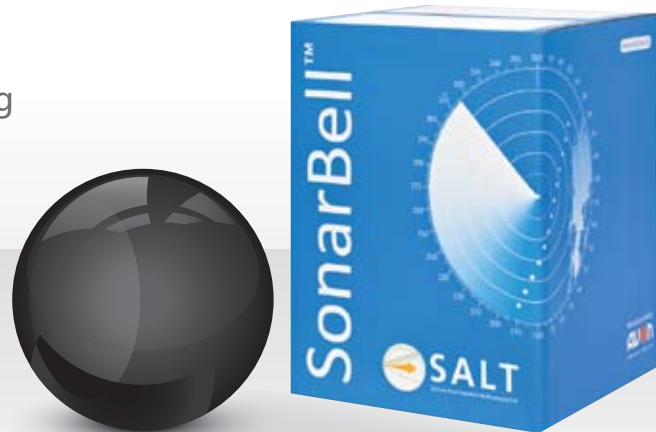


SonarBell™

Ping by Ping Sonar Performance
Measurement and Operator Training
for Swimmer Detection Systems

Performance And Training Systems (SPATS)



Accurate knowledge of detection ranges allows a graduated response by those charged with the interception of the intruder.

➔ Accurate Target Simulation

Not only does it provide a simple method of measuring system operational performance on a ping by ping basis but SonarBell™ provides a realistic target mimic for operator training and exercise.

➔ Knowledge is power

Knowing how long you have to respond to any perceived threat allows for more appropriate management of the interception teams available – correct management will result in less wasted time in potentially hostile conditions and consequently reduced team fatigue.

➔ Operational Response

SonarBell™ is out there, so you don't have to be!

Ideal water conditions allow for detection out to ranges of 800 to 1000m but...

Changes of temperature, salinity and suspended particulates can affect the range dramatically in a very short time.

SonarBell™ allows you to have real time range information enabling optimal deployment of response teams.



USS Cole

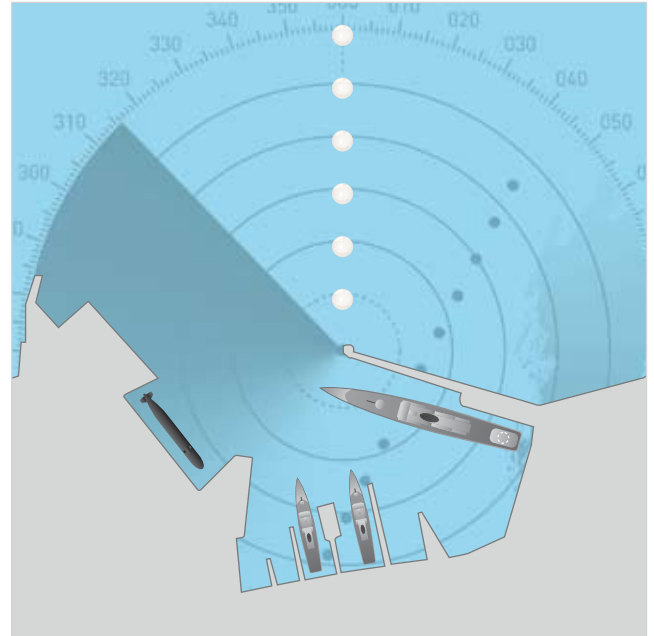
“Know your sonar’s operational
performance when it really matters”

➔ Easily and Rapidly Deployed

Due to its simplicity and omni-directional nature the SonarBell™ is dependable and easily deployed.

Unlike alternatives, SonarBell™ provides a consistent target strength giving a clear indication of water conditions. SonarBell™ does not require a shore power supply or batteries to operate making installation and maintenance substantially simpler.

Installation is simply a matter of picking a suitable point at the desired range marker and deploying the SonarBell™ with an appropriate weight attached over the side of a small vessel, using the fixings supplied.



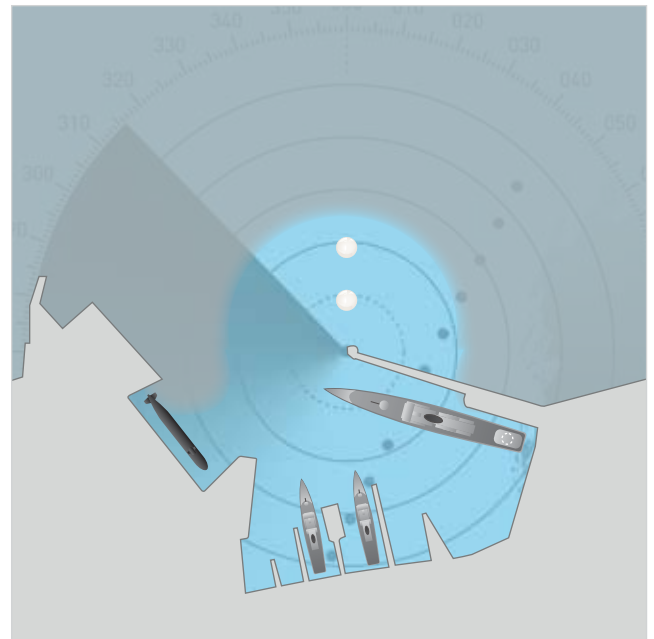
➔ Training

Cost effective operator training is possible through the use of SonarBell™ deployed either statically into the water column or via a "tow" from a surface vessel. SonarBell™ can be manufactured to give different return strengths and thereby provides targets with different signatures for operator and sonar work-up and exercise training.

A typical diver swims at 1 knot - a diver detected at 800m would take 26 minutes to arrive on target – plenty of time to respond.

SonarBell™ Advantages

- ➔ Inert, stable and completely passive device
- ➔ Tuneable Target
- ➔ Omni-directional
- ➔ No Maintenance
- ➔ Easily Deployed
- ➔ Easily Recovered



Changes in water conditions could reduce the detection time to 6 minutes. This is the difference between having a response team on the dock side or on the water.

