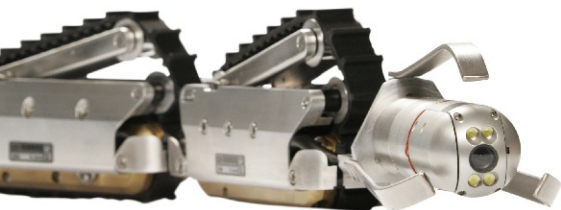


# The Evolution of Pipe Inspection

Inuktun technology lets you... see it for yourself.



**INUKTUN**  
CRAFTSMANSHIP IN HIGH TECHNOLOGY

**see it** for yourself.

**A** precision miniature crawler system for pipe sizes from a minimum internal diameter of 4" / 100mm, including high-quality pan & tilt color camera. Easy-to-use system penetrates up to 600' / 180m of pipe and overcomes obstacles and offset joints. Adaptable for round pipe or flat surfaces in parallel and in-line configurations, the unit is waterproof to 100' / 30m and weighs just 20lbs / 9kg.

## APPLICATIONS

- Sewer and storm drains
- Air ducts
- Steam headers
- Tank and pressure vessels
- Oil and gas refineries and pipelines
- Pulp and paper

## BENEFITS

- Adjustable for a range of pipe diameters from 4"/10cm to 24"/61cm
- Easily configurable for round pipe or flat surface operation
- Waterproof to 100'/30m
- Can penetrate up to 600'/183m
- Low maintenance
- Steerable in the parallel configuration in 6"/152mm and larger pipes
- \* Magnetic option available for vertical operation

For more information on advanced pipe inspection systems, contact Inuktun today.

CALL 1 877 468 5886

E-MAIL [sales@inuktun.com](mailto:sales@inuktun.com)

ONLINE [www.inuktun.com](http://www.inuktun.com)

Roper Resources  
Cdn Sales: (250)361-9115  
US Sales: (805)798-0277  
email: [chris@roperresources.com](mailto:chris@roperresources.com)  
[www.roperresources.com](http://www.roperresources.com)

**VERSATRAX 100**



## Vehicle

**Speed** up to 32/10m per minute

**Transporter** 2 Brass Microtracs™ Crawler Units

**Tether Cable** 600/180m; Multi-conductor;  
Abrasion Resistant Rilsan

**Weight** 20lbs/9kg with brass Microtracs™

**Minimum Pipe Diameter** 4"/100mm in-line chassis  
6"/152mm parallel chassis

**Chassis** 4"/100mm In-line or 6"/152mm and greater Parallel

**Chassis Material** Aluminum

## Camera

**Type** Inuktun Spectrum 45™ pan & tilt camera

**Pick-up-element** 1/4" Colour CCD

**Resolution** 400 TV Lines

**Focus** Fixed

**Iris** Auto Electronic

**Sensitivity** < 1lux

**Options** Crystal Cam

## Auxiliary Lighting

2X20W Quartz/Halogen

Variable intensity

## Operating Environment

**Temperature** 0° to 50°C (32° to 122°F)

**Depth Rating** 100/30m

## Control System

**Power** 110/220 VAC

**Chassis** Pelican Case

**Control** Membrane panel with variable joystick;  
Cruise control

**Tether Reel** Manual Crank

**Video Overlay** Date/Time, Tether Distance  
Menu System for Options

CALL 1 877 468 5886

E-MAIL [sales@inuktun.com](mailto:sales@inuktun.com)

ONLINE [www.inuktun.com](http://www.inuktun.com)

Roper Resources  
Cdn Sales: (250)361-9115  
US Sales: (805)798-0277  
email: [chris@roperresources.com](mailto:chris@roperresources.com)  
[www.roperresources.com](http://www.roperresources.com)

Printed in Canada

\* Specifications subject to change

VERSATRAX 100

