



## SonarWiz.MAP: Rapid Sonar Mapping

Chesapeake Technology Inc. ([www.chesapeaketech.com](http://www.chesapeaketech.com)) presents **SonarWiz.MAP** the fastest easiest to use acoustic mapping package available. **SonarWiz.MAP** produces real-time mosaics, post-processed mosaics at any resolution any size on the fly instantly. **SonarWiz.MAP** supports most of the common acoustic data types as well as georeferenced imagery (TIFF, JPEG and BMP).

**SonarWiz Real-time Mosaic**

File Edit View Utilities Help

Licensed To: John Gann  
Chesapeake Technology, Inc.

Cursor Position  
X:716954.3 Y:3829096.5  
34° 34.8463' N 120° 38.0822' W  
C:\XtfTracker\Releas...Demo1.xml

Recording OFF

Now Playing: van4-B

Gain

Pixel Size: 13.782

Real-time Sonar Position  
X:719984.9 Y:3825376.2  
34° 32.7970' N 120° 36.1601' W

Monitor

ALONG 0110401 VAN-0002 TO END 028001

Real-time Mosaic

24.0

Ready

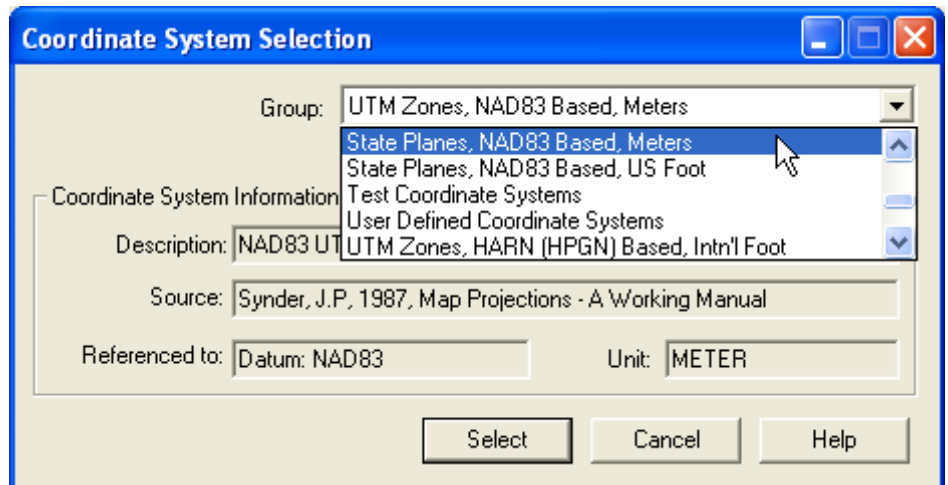


## SonarWiz.MAP: Real-time Mosaics

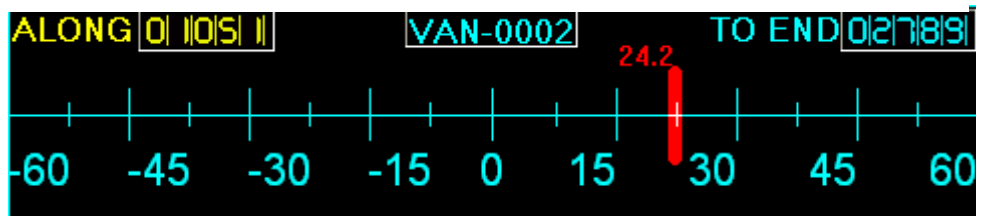
**SonarWiz.MAP** is a sonar mosaicking and mapping system that supports both real-time and post processed mosaic production. Interactive visualization tools such as zoom, pan, measure and on-the-fly image scaling make SonarWiz.MAP an indispensable tool for sonar mosaic production and interpretation. SonarWiz.MAP supports a broad range of common sidescan sonar data formats as well as map enhancing georeferenced base maps.

### Software Features...

- Real-time and post processed sonar mosaic production.
- Real-time survey-line generator, editor and steering indicator makes line following a breeze.
- Real-time QC-sonar waterfall display
- Interactive and on-the-fly scaling
- Support for over 1000 different coordinate systems including user defined datums and projections.
- Printed output to any windows supported printer or plotter.
- Bottom Tracker
- Non-linear per-channel TVG.
- Beam Angle Correction
- On-screen tools make difficult tasks such as adjusting survey lines simple.
- GeoTiff output in user specified resolution.
- Supports the use of any georeferenced JPEG, TIFF or BMP as a base map.
- Full online HTML help system.
- Unmatched customer support.
- Yearly Maintenance Agreement available for extended upgrade and support options.



Real-time Survey Line Follower and Left Right Steering Indicator



Real-time Sonar Waterfall Monitor

