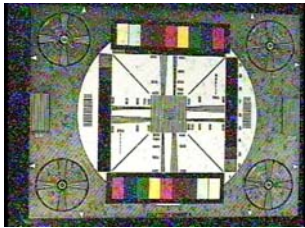
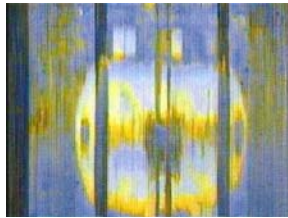


Why CID?

The Charge Injection Device is the world's most widely used radiation tolerant solid state imager. Unlike charge coupled devices, there is no "snow" from gamma, and no sudden failure of the imager after exposure. CID Imagers are designed to be radiation tolerant, not just shielded or modified. Our cameras use no lead shielding, and all electronics in the camera head are radiation tolerant.

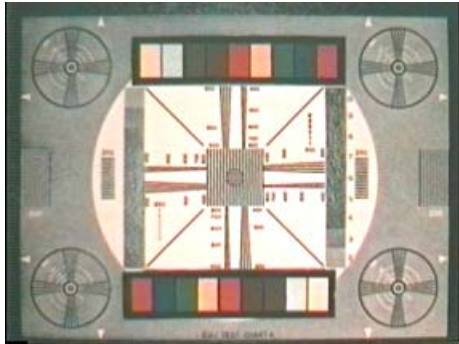


⇐ CCD image at t=0, 100 Gy/hr Cobalt-60 source

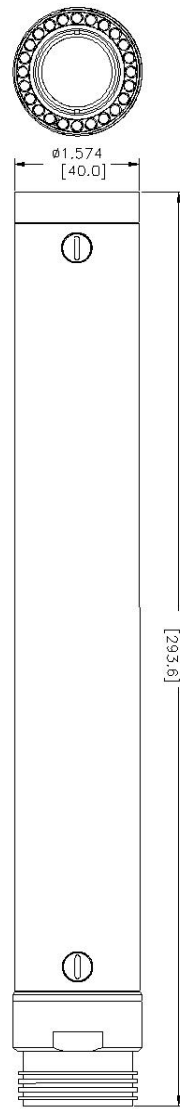


CCD image after 1 hr., 100 Gy (0.01 MRad) ⇒

AquaRAD image under radiation, 10,000 Rad/hr (100 Gy/hr) ⇒



⇐ AquaRAD image under radiation: 10,000 Rad/hr (100 Gy/hr), after 45 hr. Total dose, 0.45



symphotic Tii
corporation

880 Calle Plano, Unit K
Camarillo, CA 93012

Phone: 805-484-6639
Fax: 805-484-9012

Email: info@symphotic.com www.symphotic.com

© 2005, 2006 Symphotic TII Corporation, all rights reserved

Take A Closer Look

The
Camera:
AquaRAD HS
Radiation Tolerant Color Camera for
Underwater Use.



symphotic Tii
corporation

For information, contact:

1-866-828-4388 toll free

Radiation Tolerant Color Camera for Underwater Use in Tight Spaces

The Camera: AquaRAD HS is the latest radiation tolerant solid state camera for color imaging underwater. Simple to operate, modular design, portable. The AquaRAD has resolution, color, and radiation tolerance for critical inspections and monitoring.

Radiation tolerant, Color, Simple to Operate

Designed for use in high radiation environment such as reactor inspection, spent fuel management, waste management, and other critical path applications where radiation tolerance, simple setup, and rapid deployment are required. The AquaRAD HS can also be used in air, mounted to remotely operated vehicles, or mounted to underwater pan and tilt mechanisms.

Roper Resources
Cdn Sales: (250)361-9115
US Sales: (805)798-0277
email: chris@roperresources.com
www.roperresources.com

The Camera: AquaRAD HS Specifications:

Submersible Charge Injection Device based solid state color camera system for use in high radiation environments such as nuclear power plant refueling operations, inspections, and spent fuel management. 40 mm narrow profile.

Imager:

2/3 in optical format radiation tolerant charge injection device.

TE cooled.

Imager and electronics radiation tolerant to greater than 5×10^6 Rad(Si) total dose= (5×10^4 Gy.)

Self-annealing for higher total dose.

>400 TVL Horizontal resolution.

Lens and viewing Systems:

25 mm f/1.4 Radiation tolerant lens (non-browning).

Right angle rotating viewing and lighting accessory option

Close up lighting:

High intensity LEDs for close-up lighting.

Radiation tolerant materials

Variable intensity controller

Camera, Lens and Lighting Control Unit:

Remote Control unit with focus and light control as well as control of optional accessories.

Rugged, water resistant housing.

Housing:

Stainless Steel.

The Camera: AquaRAD specifications (continued)

Camera Head dimensions (with 25 mm lens):

294mm length x 40 mm diameter, 1 kg

12 in. length x $1 \frac{5}{8}$ in. diameter, 2 lbs.

Cable:

40 meter radiation tolerant pressure tested cable. 37 conductors.

16 VDC maximum voltage.

100-120 V 50/60 Hz

Video Output: NTSC Color video using standard coaxial cable with BNC connector.

Options Available:

Right angle viewers.



Removable right angle viewer

symphotic Tii
corporation

880 Calle Plano, Unit K
Camarillo, CA 93012

Phone: 805-484-6639

Fax: 805-484-9012

Email: info@symphotic.com

www.symphotic.com